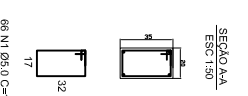
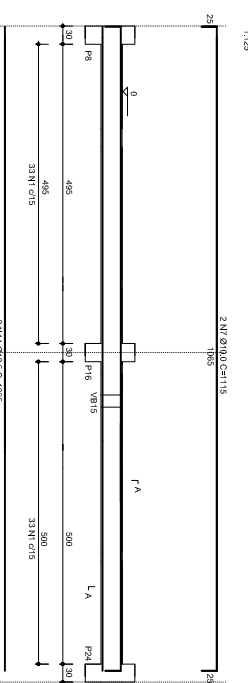
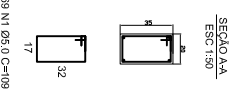
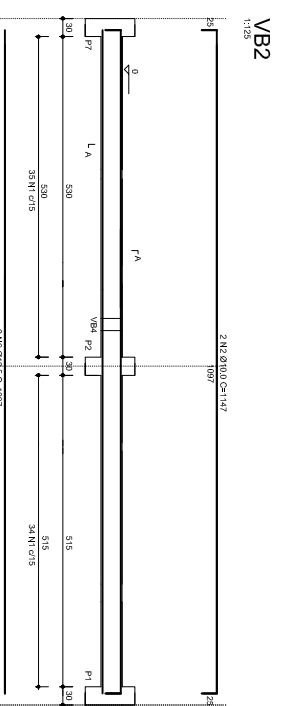


RELAÇÃO DO AÇO

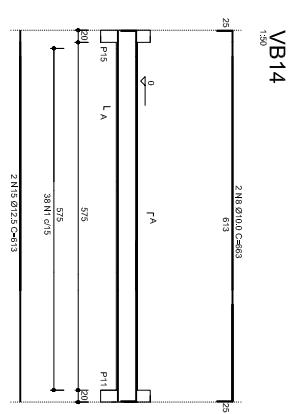
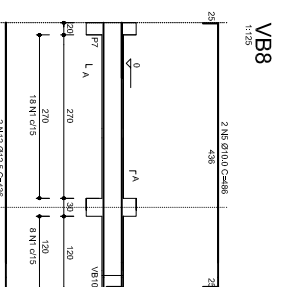
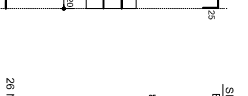
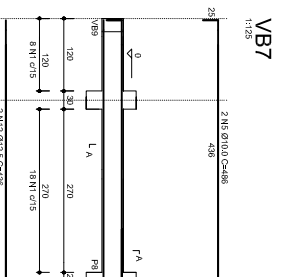
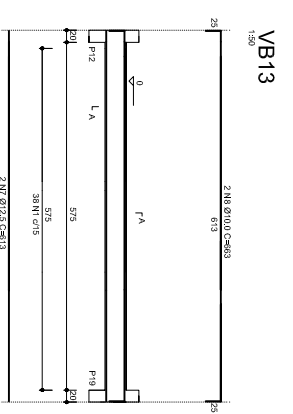
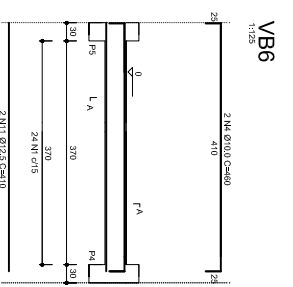
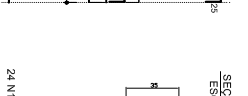
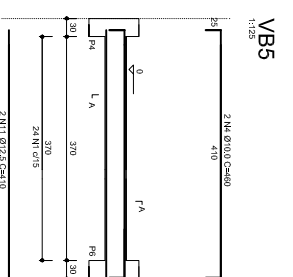
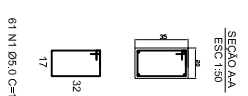
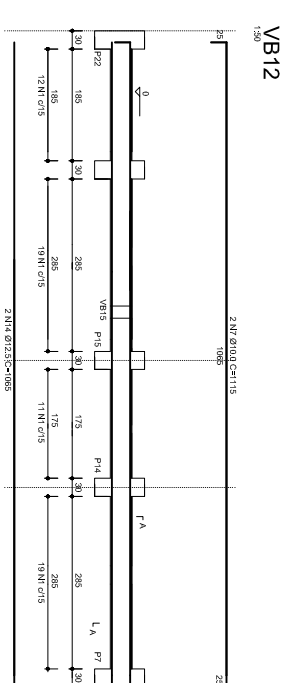
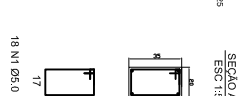
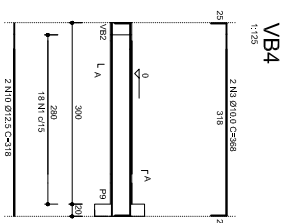
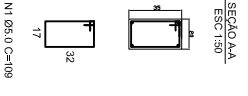
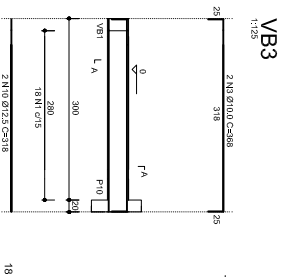
BELOMBO	N	DIAM	Q	UNIT	C.TOTAL
VB1	1	5,0	459	109	50031
VB2	2	10,0	4	1147	4598
VB3	3	10,0	4	486	4172
VB4	4	10,0	4	486	4172
VB5	5	10,0	4	486	4172
VB6	6	10,0	4	233	1944
VB7	7	10,0	4	1115	932
VB8	8	10,0	4	659	4480
VB9	9	12,5	4	1096	2652
VB10	10	12,5	4	1147	4395
VB11	11	12,5	4	410	1640
VB12	12	12,5	4	436	1744
VB13	13	12,5	4	183	732
VB14	14	12,5	4	1065	4260
VB15	15	12,5	4	613	2452



RESUMO DO AÇO

AÇO	DIAM	C.TOTAL (m)	PESO (kg)
CA50	10,0	178,88	110,37
CA50	12,5	194,88	158,76
CA60	5,0	500,31	77,05
<b>PESO TOTAL</b>			<b>346,18</b>
CA50 (kg)			269,15
CA50			77,05

Vol. concreto (lcm=25kg/m³) = m³  
 Área de forma bal = m²



PROPRIETÁRIO:

ILDO JOSÉ ORTI  
PREFEITO MUNICIPAL

RESPONSÁVEL TÉCNICO:

MARCOS ANDRÉ MIOZZO ZAVODNIK  
Eng. Civil CRM/RS 1.67692

ESCALA:

INDICADA

FRANCHA Nº:

EST  
04/09

OBRA LOCAL:  
**Centro Municipal de Eventos**  
Rua Crispim Teixeira Sobrinho, S/Nº, Colônia-RS

TÍTULO:  
**Projeto Estrutural**

DESCRIÇÃO:  
**Vigas Baldrame**