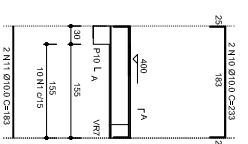
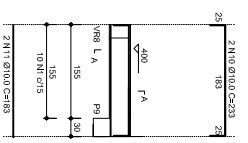


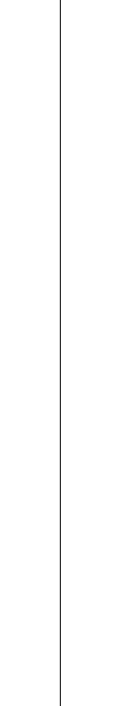
SEÇÃO AA
ESC 1:50
24 NI 05.0 C-89



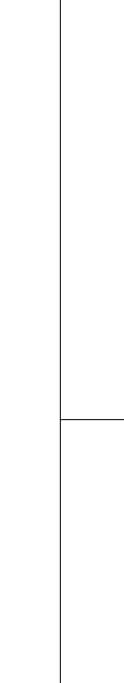
SEÇÃO AA
ESC 1:50
10 NI 05.0 C-49



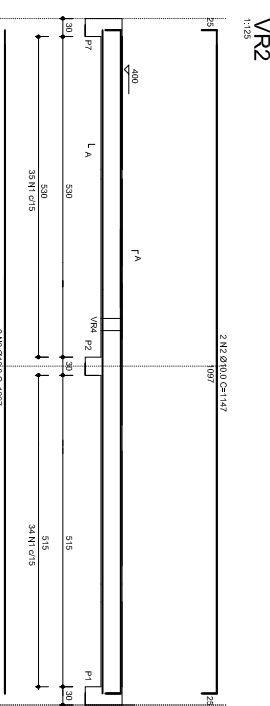
SEÇÃO AA
ESC 1:50
10 NI 05.0 C-49



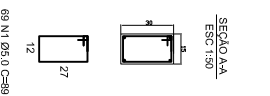
SEÇÃO AA
ESC 1:50
24 NI 05.0 C-89



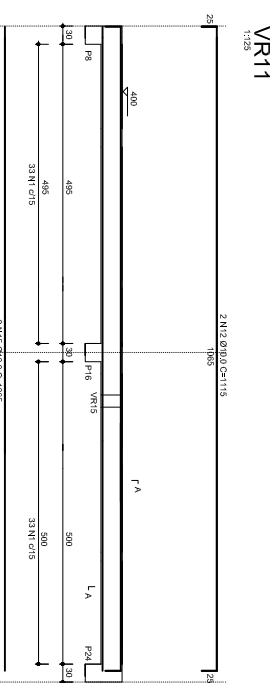
SEÇÃO AA
ESC 1:50
68 NI 05.0 C-89



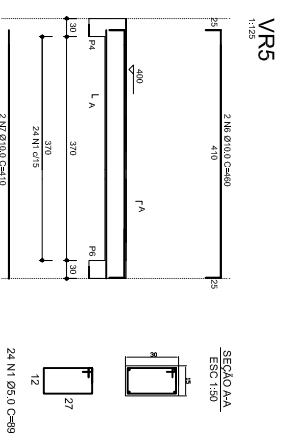
SEÇÃO AA
ESC 1:50
18 NI 05.0 C-49



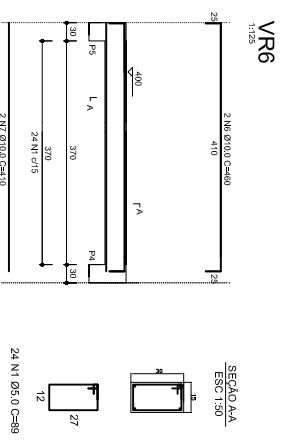
SEÇÃO AA
ESC 1:50
18 NI 05.0 C-49



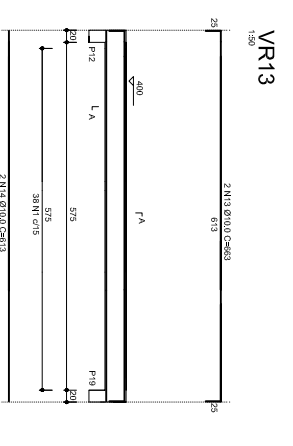
SEÇÃO AA
ESC 1:50
61 NI 05.0 C-89



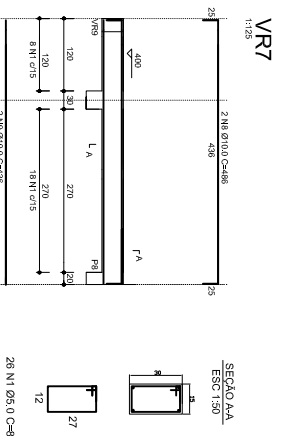
SEÇÃO AA
ESC 1:50
24 NI 05.0 C-89



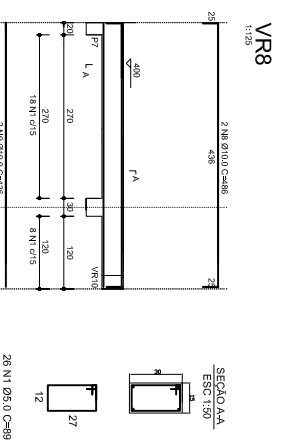
SEÇÃO AA
ESC 1:50
24 NI 05.0 C-89



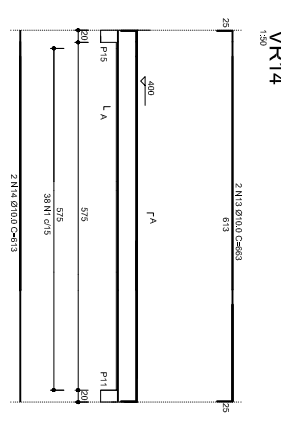
SEÇÃO AA
ESC 1:50
38 NI 05.0 C-49



SEÇÃO AA
ESC 1:50
26 NI 05.0 C-49



SEÇÃO AA
ESC 1:50
26 NI 05.0 C-49



SEÇÃO AA
ESC 1:50
38 NI 05.0 C-49

RELACÃO DO AÇO

AÇO	N	DIAM	Q	UNIT	C.TOTAL
CA50	1	5.0	497	89	44233
	2	10.0	4	1147	4588
	3	10.0	4	1097	4398
	4	10.0	4	1097	4398
	5	10.0	4	318	1272
	6	10.0	4	460	1840
	7	10.0	4	410	1640
	8	10.0	4	486	1944
	9	10.0	4	436	1744
	10	10.0	4	442	1768
CA80	11	10.0	4	183	732
	12	10.0	4	1115	4480
	13	10.0	4	653	2652
	14	10.0	4	613	2452
	15	10.0	2	1065	2130
CA80	16	12.5	2	1065	2130
	17	12.5	2	555	1110

RESUMO DO AÇO

AÇO	DIAM	C.TOTAL	PESO
CA50	10.0	322.46	198.95
CA50	12.5	32.40	31.20
CA80	5.0	442.33	68.11
CA50	230.15		
CA80	68.11		

ORÇAMENTO LOCAL:
Centro Municipal de Eventos
Rua Crispim Teixeira Sobrinho, S/Nº, Colíllia-RS

TÍTULO:
Projeto Estrutural

DESCRIÇÃO:
Vigas de Respaldo

PROPRIETÁRIO:
TILDO JOSÉ ORTH
PREFEITO MUNICIPAL

RESPONSÁVEL TÉCNICO:
MARCOS ANDRÉ MIOZZO ZAVODNIK
Eng. Civil CRM/RN 1.67692

ESCALA:
INDICADA

FRANQUINIA Nº:
EST 08/09

DATA:
ABRIL/2019